

[EnchantedLearning.com](http://EnchantedLearning.com)

[Answers](#)   **Label the External Spider Anatomy Diagram**   [Spider Printouts](#)

Read the definitions, then label the external spider anatomy diagram below.

**abdomen** - the belly, also called the opisthosoma. It contains the guts, heart, reproductive organs, and silk glands.

**cephalothorax** - the fused head and thorax, also called the prosoma. It contains the brain, jaws, eyes, stomach, and leg attachments.

**eyes** - tiny eyes (also called ocelli) that can only detect light and dark - they are located on top of the spider's cephalothorax. Most species of spiders have 8 eyes, but other species have 12, 6, 4, 2 or no eyes.

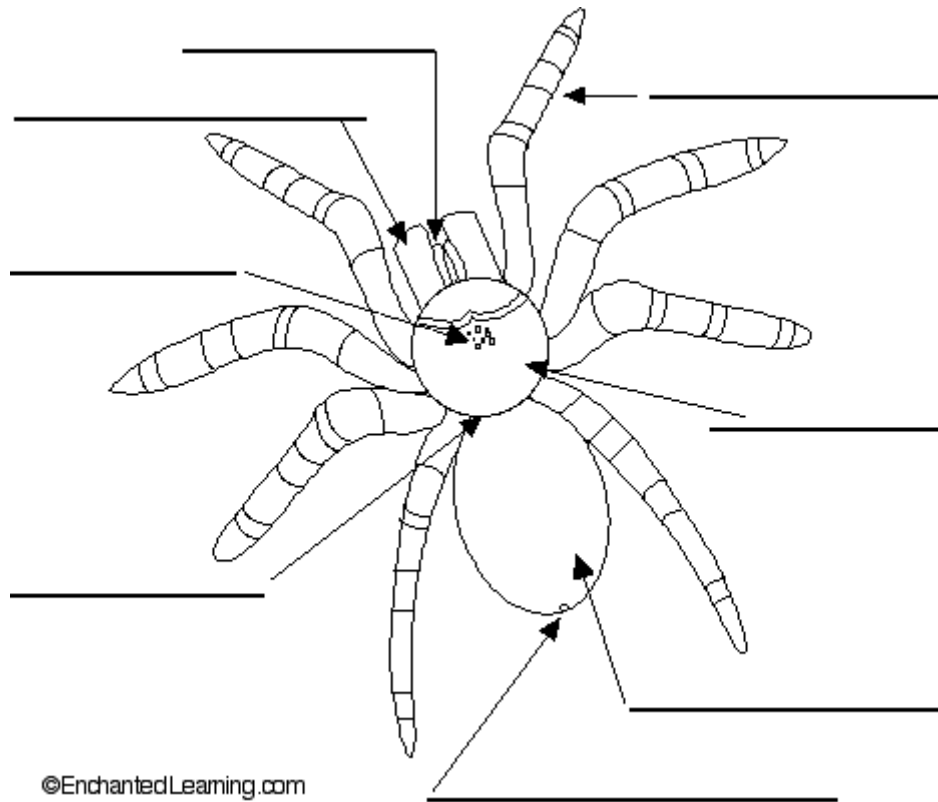
**jaws** - also called chelicera, they are located below the eyes. The jaws are tipped with fangs that can inject poison.

**leg** - spiders have 8 legs. Each leg is made of seven segments and has 2 or 3 tiny claws at the tip. If a leg is lost, it will grow back.

**pedicel** - the spider's waist - it connects the cephalothorax and the abdomen.

**pedipalps** - also called palps, these two sensory feelers look like very short legs attached to the front of the spider - they taste food.

**spinnerets** - where the spider's silk is released - they are located at the tip of the abdomen.



Copyright ©2001-2007 [EnchantedLearning.com](http://EnchantedLearning.com)